



**Speed Queen**

COMMERCIAL LAUNDRY EQUIPMENT



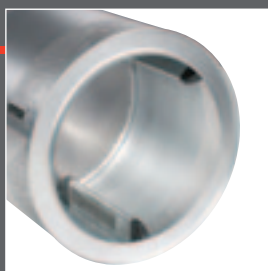
**COIN OPERATED TUMBLE DRYERS**

**LOADSTAR®**

0220 – 0270 – 0350 – 50 – 55

**TWINSTAR®**

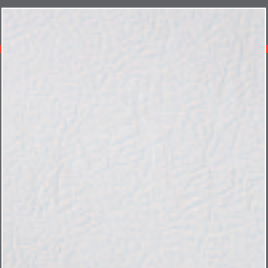
0300 – 045



01

#### Standard galvanized drum

- Superior quality
- Corrosion-resistant
- Oval drum holes preventing damage from standard drywall screws
- Stainless steel drum: optionally available



02

#### Superior finish

- Embossed steel front & side panels: easy to clean & long life-span
- Stainless steel front panel: optionally available



03

#### Large stainless steel door

- Large door opening: easy & efficient loading and unloading of the linen
- Door opening positioned on the most appropriate height from the floor: easy for the staff to load and unload
- Extra strong hinges and heavy-duty stainless steel door handle: designed for use in high-industrial environments
- Door can open 180°
- Door can be reversed to open from the right or left



04

#### Self-cleaning lint filter

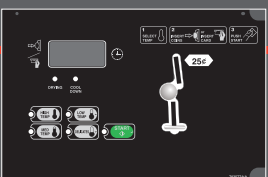
- Deposit of lint into a large storage area
- Easy removal of lint
- Efficient drying
- No manual cleaning of the filter is needed



05

#### TWINSTAR®: stack tumbler dryers

- Double capacity in the same floor space
- Extra large cylinder capacity
- Available with stainless steel front panel



06


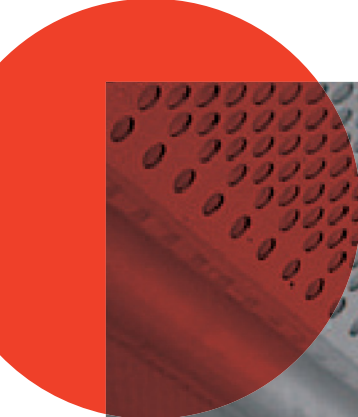
#### Control Options

- This control's digital display is highly reliable and future proof. It shows vend price, while customers stay informed during operation with its digital cycle countdown. This control can interface with the store owner's card manufacturer of choice.

## SPECIFICATIONS

		0220	0270	0350	50	55	0300	045
Capacity 1/20	(kg)	11	13,6	17,4	26,4	24,6	2 x 15	2 x 21
Capacity 1/25	(kg)	8,7	10,8	14	21	19,6	2 x 12	2 x 16,8
Cylinder Diameter	(mm)	673	673	762	939	838	762	838
Cylinder Depth	(mm)	610	762	762	762	889	660	762
Cylinder Volume	(l)	217	271	347	528	491	2 x 301	2 x 421
Average sound Pressure	(dbA)	60	61	63	60	63	65	63
Door opening diameter	(mm)	576	576	576	683	683	576	683
Height under door	(mm)	699	699	699	730	683	254 / 1219	229 / 1245
Reversible door	(L/R)	Yes	Yes	Yes	Yes	Yes	No	No
Power motor	Drum (W)	187	187	187	0,25	373	187	373
	Fan (W)	187	187	187	0,25	373	187	373
Airflow pattern		Axial	Axial	Axial	Radial	Axial	Axial	Axial
Steam @ 6,9 bar	(kW)	39,6	39,6	48,6	52	-	32,5	-
	(Btu/h)	135.000	135.000	166.000	178.000	-	111.000	-
Steam @ 1,0 bar	(kW)	26,4	26,4	37,8	34,8	-	21,7	-
	(Btu/h)	90.000	90.000	129.000	119.000	-	74.000	-
Air outlet diameter	(mm)	152	152	203	203	203	203	254
Airflow rate (50Hz)	(l/s)	203	203	260	354	283	160	236
Gas supply	(inch)	½	½	½	½	½	½	½
Dimensions (mm)	H	1622	1622	1622	1946	1695	1937	2059
	W	711	711	800	981	876	800	876
	D	1038	1191	1191	1194	1362	1086	1235
Packing dimensions (mm)	H	1753	1753	1753	2057	1829	2057	2159
	W	762	762	838	1054	902	825	902
	D	1092	1245	1245	1323	1499	1194	1372
Weight (kg)	Net	135	150	164	247	197	247	305
	Shipping	151	165	179	273	216	264	326

Available voltages		0220	0270	0350	50	55	0300	045
Electric	230V / 1 / 50Hz	58 A	95 A	108 A	73 A	119 A	-	-
Electric	230V / 3 / 50Hz	33 A	55 A	62 A	75 A	-	2 x 55 A	-
Electric	400V / 3 / 50Hz	20 A	33 A	38 A	47 A	43 A	2 x 33 A	-
Steam / Gas	230V / 1 / 50Hz	7,5 A	7,5 A	7,5 A	6,3 A	5,5 A	2 x 7,5 A	10,8 A



**Speed Queen®**