



Washer extractor

W5180H

Features and benefits

- **Compass Pro® microprocessor offers:**
 - Large display and one control knob for easy program selection
 - Language selection
 - Quick selection and option buttons for the most frequently used wash programs and options
- **AWS – Automatic Savings:**
 - The machine weighs the linen and adjusts the amount of water and energy according to the load. This leads to considerable savings in case the machine is not fully loaded. (Available on general programs)
- Extremely low water and energy consumption – see table below
- Four compartment detergent box for manual dosing of powder or liquid detergent
- High extraction force for efficient dewatering
- Door with gasket and strong hinges built for heavy duty operation
- Stainless and galvanized steel in all vital parts for high degree of rust protection
- **Power Balance:**
 - Maximises the extraction force, leading to highest dewatering and savings in drying
 - Minimizes the stress on the machine, leading to trouble-free operation and increased machine lifetime
 - Reduces vibrations, making it possible to install the machine in all locations



Images shown are a representation of the product only and variations may occur.

Main options

- Automatic liquid detergent supply (optional I/O board)
- Connection to booking- /payment- system or coin meter



Main specifications				W5180H			
Max. capacity	filling factor 1:9	kg/lb		20/45			
Drum, volume		litre/ft ³		180/6.4			
	diameter	ø mm/inch		725 / 28 9/16			
Extraction		rpm		1055			
G-factor				450			
Standard heating alternatives	electricity	kW		18.0			
		steam		x			
		non-heated		x			
Modified energy factor				2.3			
Water factor				4.1			
Consumption data 6S03/6L33				EI		Steam***	
"Warm" *				Full load, 20 kg	Half load**, 10 kg	Full load, 20 kg	Half load**, 10 kg
Total time		min		25.5	24	25.5	24
Water consumption (cold+hot)		litre/gallon		113/30 + 10/3	62/16 + 6/2	123/32 + 0/0	68/18 + 0/0
Energy consumption (motor/heating/hot water)		kWh		0.30/1.5/0.65	0.30/0.7/0.4	0.30/-	0.30/-
Steam consumption		kg/lbs		-	-	3.2/7.1	1.7/3.7
Residual moisture		%		50	51	50	51

* Water temperature 59°F cold water and 149°F hot water.

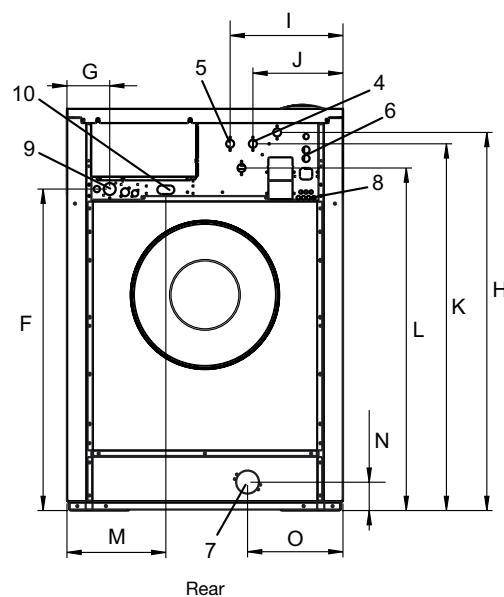
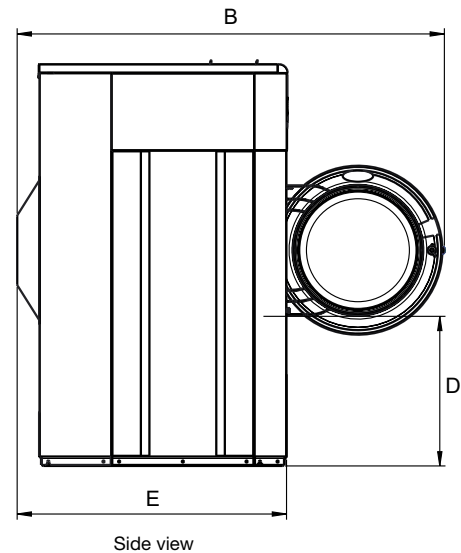
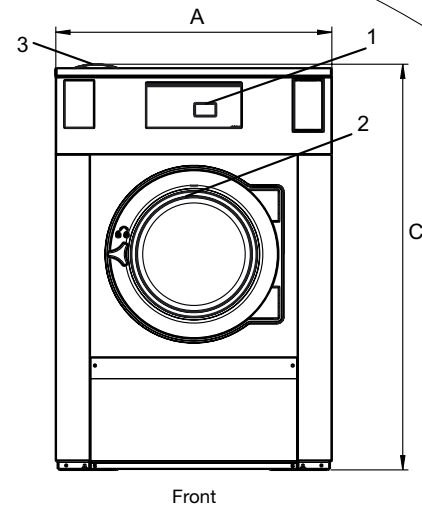
** Programs with AWS.

*** Depending on steam pressure.



Electrical connections*					
Heating alternative	Main voltage		Heating power kW	Total power kW	Recommended ITCB A
		Hz			
Electric heated	208-240V 1 ~	60	18.0	18.3	60
	440V 3 ~	60	18.0	18.4	35
	480V 3 ~	60	18.0	18.4	30
Steam or Non heated	120V 1 ~	60	-	2.3	30
	208-480V 1/3 ~	60	-	2.4	15

Water and steam connection		W5180H
Water valves	DN/inch	20
Water pressure	psi	30-90
Capacity at 300 kPa	l/min	30
Drain valve	ø mm/inch	75 / 3
Draining capacity	l/min	170
Steam valve	DN/inch	15 / 1/2
Steam pressure	psi	7-40
Liquid detergent supplies		5
Floor requirements		
Frequency of the dynamic force	Hz	17.6
Floor load at max extraction	kN	4.2 ± 1.0
Sound levels		
Sound power level (IEC 60704-2-4) wash	dB(A)	67
extraction	dB(A)	85
Heat emission		
% of installed power, max		5
Shipping data**		
Weight	net, kg/lbs	354 / 780
Shipping volume	m ³ /ft ³	1.66 / 59
Accessories		
Steel base		x
Hose kits for water or steam		x
Fluff collector		x
Dimensions in mm/inch		
A Width		970 / 38 3/16
B Depth		1501 / 59 1/8
C Height		1426 / 56 1/8
D		526 / 20 11/16
E		947 / 37 5/16
F		1130 / 44 1/2
G		150 / 5 7/8
H		1329 / 52 5/16
I		397 / 15 5/8
J		317 / 12 1/2
K		1289 / 50 3/4
L		1204 / 47 3/8
M		348 / 13 11/16
N		100 / 3 15/16
O		335 / 13 3/16
1 Operating panel	6 Re-used water	
2 Door opening ø 435 mm / 17 1/8 inch	7 Drain	
3 Detergent box	8 Liquid detergent supply	
4 Cold water	9 Electrical connection	
5 Hot water	10 Steam connection	



Front and side panels in light grey and blue (RAL 260 70 05, 250 60 30)

* Other voltages available, see installation manual.

** Average data. Crated weight/shipping volume depends on configuration. Please contact logistics for exact measures.